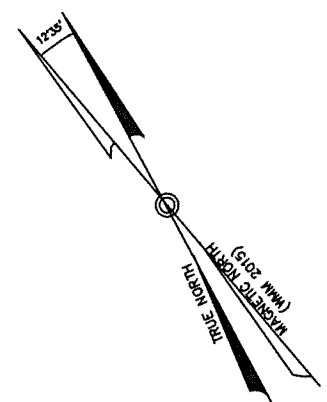
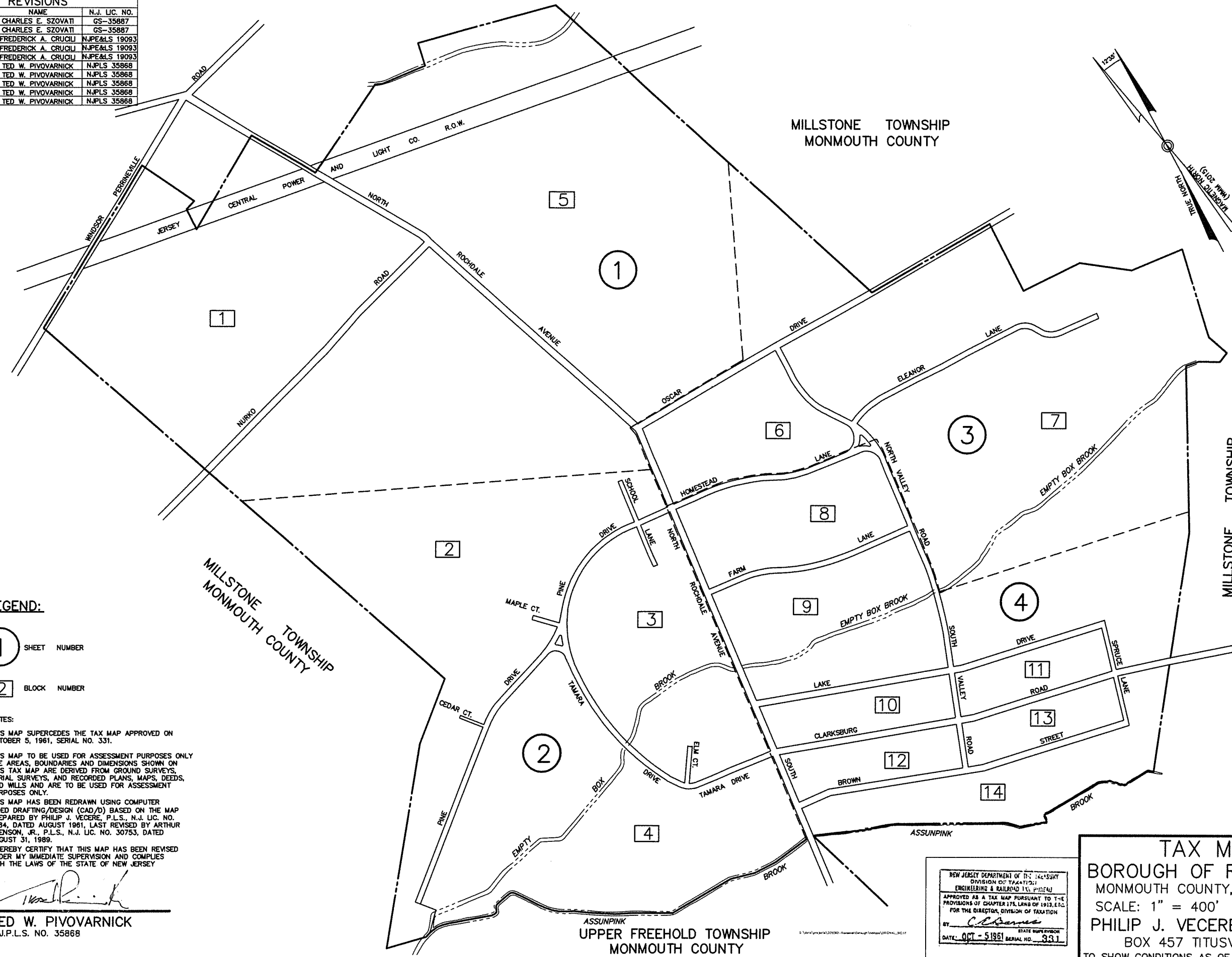


TAX MAPS

BOROUGH OF ROOSEVELT

Monmouth County, New Jersey

DATE	NAME	N.J. LIC. NO.
09/01/05	CHARLES E. SZOVATI	GS-35887
02/05/09	CHARLES E. SZOVATI	GS-35887
12/31/10	FREDERICK A. CRUCI	N.J.P.E.&S 19093
12/31/13	FREDERICK A. CRUCI	N.J.P.E.&S 19093
12/31/14	FREDERICK A. CRUCI	N.J.P.E.&S 19093
12/31/15	TED W. PIVOVARNICK	N.J.P.L.S 35868
12/31/16	TED W. PIVOVARNICK	N.J.P.L.S 35868
12/31/17	TED W. PIVOVARNICK	N.J.P.L.S 35868
12/31/18	TED W. PIVOVARNICK	N.J.P.L.S 35868
12/31/19	TED W. PIVOVARNICK	N.J.P.L.S 35868



LEGEND:

- ① SHEET NUMBER
- ② BLOCK NUMBER

NOTES:

THIS MAP SUPERCEDES THE TAX MAP APPROVED ON OCTOBER 5, 1961, SERIAL NO. 331.

THIS MAP TO BE USED FOR ASSESSMENT PURPOSES ONLY. THE AREAS, BOUNDARIES AND DIMENSIONS SHOWN ON THIS TAX MAP ARE DERIVED FROM GROUND SURVEYS, AERIAL SURVEYS, AND RECORDED PLANS, MAPS, DEEDS, AND WILLS AND ARE TO BE USED FOR ASSESSMENT PURPOSES ONLY.

THIS MAP HAS BEEN REDRAWN USING COMPUTER AIDED DRAFTING/DESIGN (CAD/D) BASED ON THE MAP PREPARED BY PHILIP J. VECERE, P.L.S., N.J. LIC. NO. 9884, DATED AUGUST 1961, LAST REVISED BY ARTHUR SWENSON, JR., P.L.S., N.J. LIC. NO. 30753, DATED AUGUST 31, 1989.

I HEREBY CERTIFY THAT THIS MAP HAS BEEN REVISED UNDER MY IMMEDIATE SUPERVISION AND COMPLIES WITH THE LAWS OF THE STATE OF NEW JERSEY

Ted W. Pivovarnick

TED W. PIVOVARNICK
N.J.P.L.S. NO. 35868

NEW JERSEY DEPARTMENT OF THE TREASURY
DIVISION OF TAXATION
ENGINEERING & RAILROAD TAX MAPS
APPROVED AS A TAX MAP PURSUANT TO THE PROVISIONS OF CHAPTER 175, LAWS OF 1913, ETC. FOR THE DIRECTOR, DIVISION OF TAXATION
BY: *C. J. Barnes*
STATE MAP NUMBER
DATE: OCT - 5 1961 SERIAL NO. 331

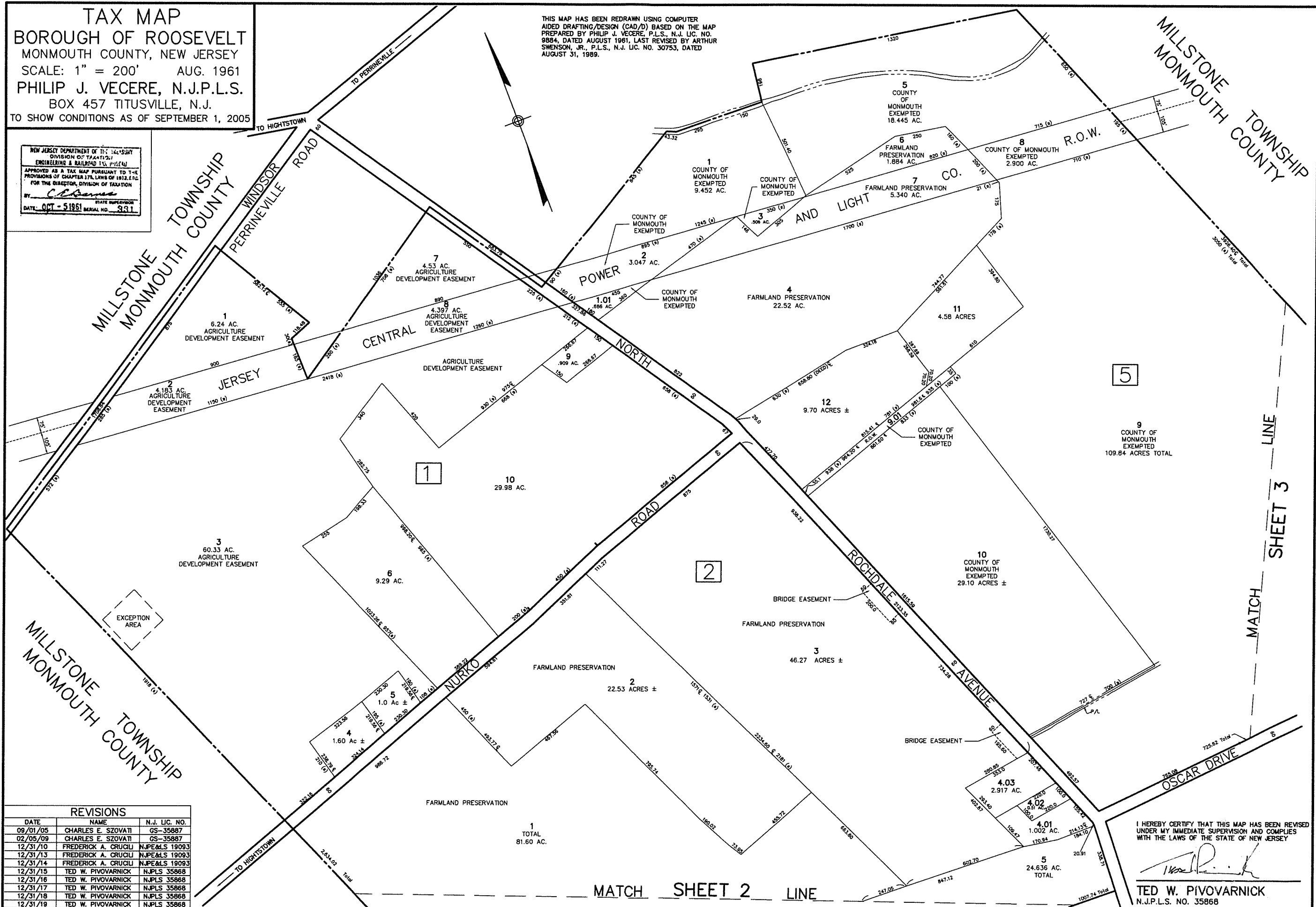
TAX MAP
BOROUGH OF ROOSEVELT
MONMOUTH COUNTY, NEW JERSEY
SCALE: 1" = 400' AUG. 1961
PHILIP J. VECERE, N.J.P.L.S.
BOX 457 TITUSVILLE, N.J.
TO SHOW CONDITIONS AS OF SEPTEMBER 1, 2005

UPPER FREEHOLD TOWNSHIP
MONMOUTH COUNTY

TAX MAP
BOROUGH OF ROOSEVELT
 MONMOUTH COUNTY, NEW JERSEY
 SCALE: 1" = 200' AUG. 1961
 PHILIP J. VECERE, N.J.P.L.S.
 BOX 457 TITUSVILLE, N.J.
 TO SHOW CONDITIONS AS OF SEPTEMBER 1, 2005

THIS MAP HAS BEEN REDRAWN USING COMPUTER AIDED DRAFTING/DESIGN (CAD/D) BASED ON THE MAP PREPARED BY PHILIP J. VECERE, P.L.S., N.J. LIC. NO. 9884, DATED AUGUST 1961, LAST REVISED BY ARTHUR SWENSON, JR., P.L.S., N.J. LIC. NO. 30753, DATED AUGUST 31, 1989.

NEW JERSEY DEPARTMENT OF TREASURY
 DIVISION OF TAXATION
 ENGINEERING & RAILROAD TITLE PLANS
 APPROVED AS A TAX MAP PURSUANT TO THE PROVISIONS OF CHAPTER 17A, LAWS OF 1912, ETC. FOR THE DIRECTOR, DIVISION OF TAXATION
 BY: *C. J. [Signature]* STATE SUPERVISOR
 DATE: OCT - 5 1961 SERIAL NO. 331



REVISIONS		
DATE	NAME	N.J. LIC. NO.
09/01/05	CHARLES E. SZOVATI	GS-35887
02/05/09	CHARLES E. SZOVATI	GS-35887
12/31/10	FREDERICK A. CRUGLI	N.I.P.E.&L.S 19093
12/31/13	FREDERICK A. CRUGLI	N.I.P.E.&L.S 19093
12/31/14	FREDERICK A. CRUGLI	N.I.P.E.&L.S 19093
12/31/15	TED W. PIVOARNICK	N.I.P.L.S 35868
12/31/16	TED W. PIVOARNICK	N.I.P.L.S 35868
12/31/17	TED W. PIVOARNICK	N.I.P.L.S 35868
12/31/18	TED W. PIVOARNICK	N.I.P.L.S 35868
12/31/19	TED W. PIVOARNICK	N.I.P.L.S 35868

I HEREBY CERTIFY THAT THIS MAP HAS BEEN REVISED UNDER MY IMMEDIATE SUPERVISION AND COMPLIES WITH THE LAWS OF THE STATE OF NEW JERSEY
[Signature]
TED W. PIVOARNICK
 N.J.P.L.S. NO. 35868

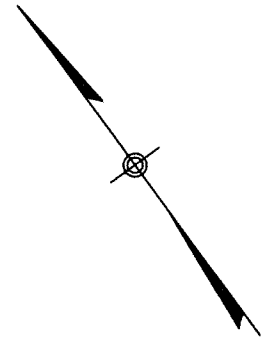
MATCH SHEET 2 LINE

MATCH LINE SHEET 3

MATCH SHEET 1 LINE

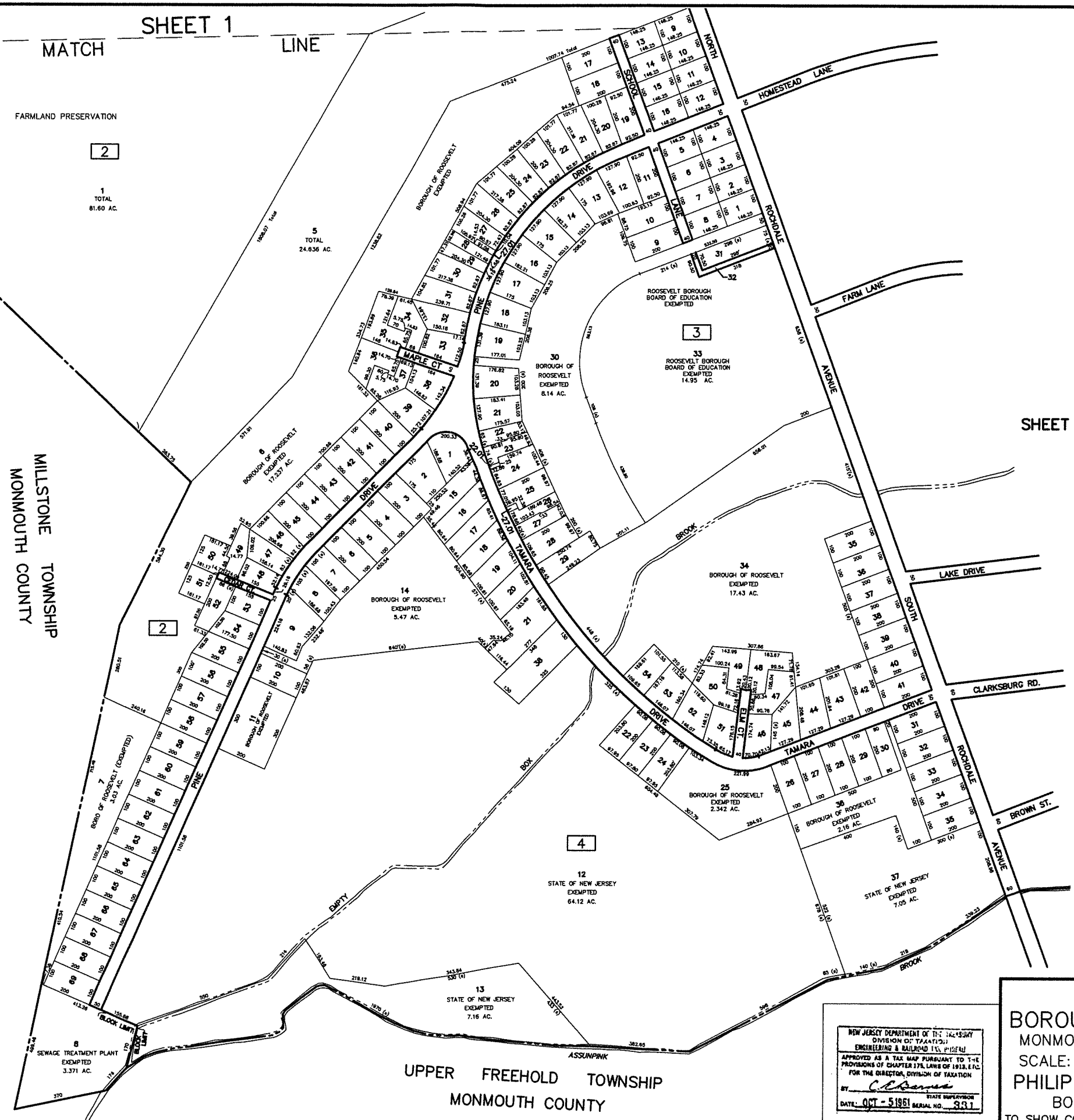
THIS MAP HAS BEEN REDRAWN USING COMPUTER AIDED DRAFTING/DESIGN (CAD/D) BASED ON THE MAP PREPARED BY PHILIP J. VECERE, P.L.S., N.J. LIC. NO. 9884, DATED AUGUST 1961, LAST REVISED BY ARTHUR SWENSON, JR., P.L.S., N.J. LIC. NO. 30753, DATED AUGUST 31, 1989.

REVISIONS		
DATE	NAME	N.J. LIC. NO.
09/01/05	CHARLES E. SZOVATI	GS-35887
02/06/09	CHARLES E. SZOVATI	GS-35887
12/31/10	FREDERICK A. CRUCI	NUPE&LS 19093
11/30/12	FREDERICK A. CRUCI	NUPE&LS 19093
12/31/13	FREDERICK A. CRUCI	NUPE&LS 19093
12/31/14	FREDERICK A. CRUCI	NUPE&LS 19093
12/31/15	TED W. PIVOVARNICK	N.J.P.L.S. 35868
12/31/16	TED W. PIVOVARNICK	N.J.P.L.S. 35868
12/31/17	TED W. PIVOVARNICK	N.J.P.L.S. 35868
12/31/18	TED W. PIVOVARNICK	N.J.P.L.S. 35868
12/31/19	TED W. PIVOVARNICK	N.J.P.L.S. 35868



MILLSTONE TOWNSHIP
MONMOUTH COUNTY

SHEET 4



I HEREBY CERTIFY THAT THIS MAP HAS BEEN REVISED UNDER MY IMMEDIATE SUPERVISION AND COMPLIES WITH THE LAWS OF THE STATE OF NEW JERSEY

Ted W. Pivovarnick

TED W. PIVOVARNICK
N.J.P.L.S. NO. 35868

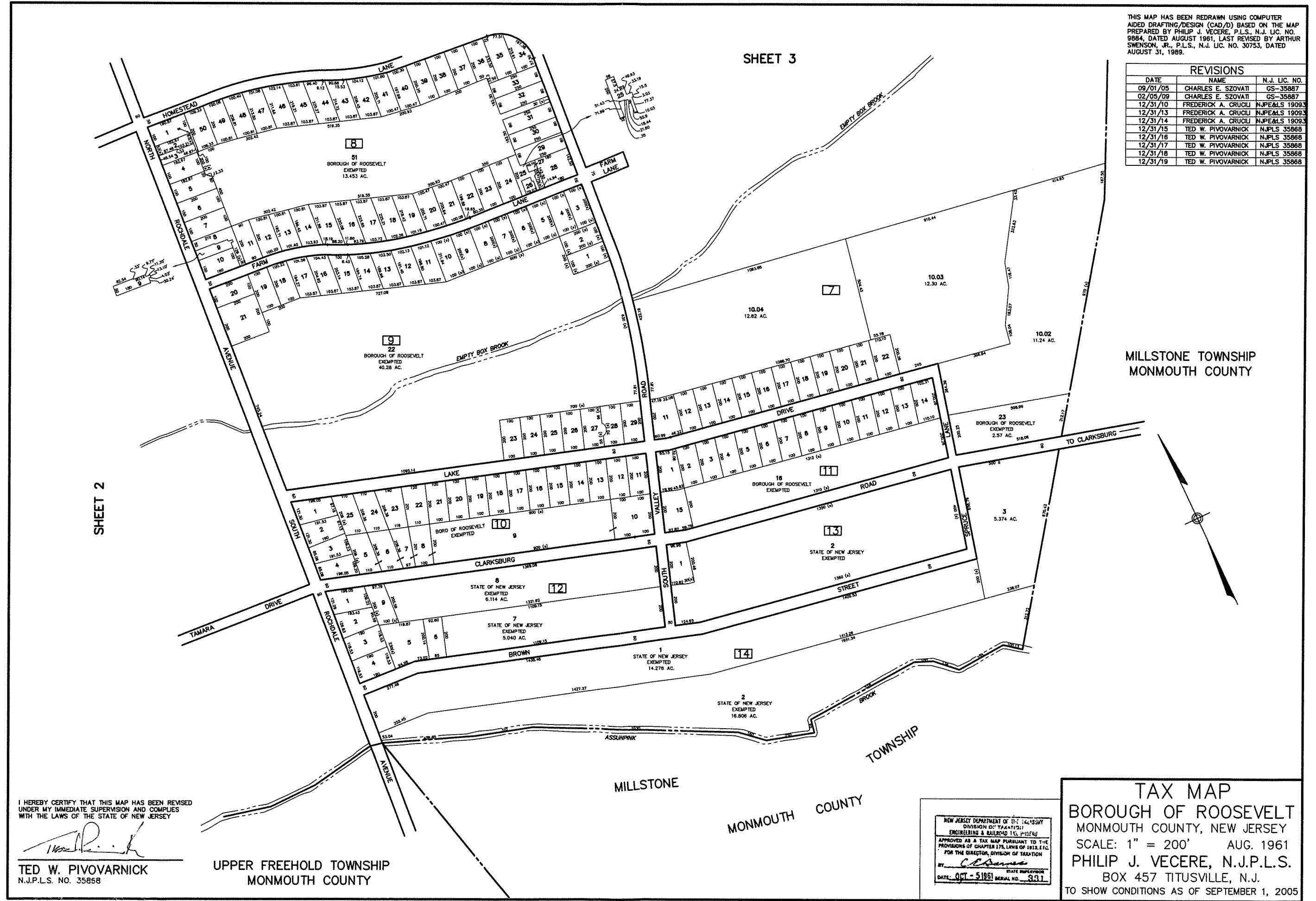
NEW JERSEY DEPARTMENT OF THE TREASURY
DIVISION OF TAXATION
ENGINEERING & SURVEYING
APPROVED AS A TAX MAP PURSUANT TO THE PROVISIONS OF CHAPTER 176, LAWS OF 1918, ETC. FOR THE DIVISION OF TAXATION

BY: *Philip J. Vecere*
DATE: OCT - 5 1961 SERIAL NO. 331

TAX MAP
BOROUGH OF ROOSEVELT
MONMOUTH COUNTY, NEW JERSEY
SCALE: 1" = 200' AUG. 1961
PHILIP J. VECERE, N.J.P.L.S.
BOX 457 TITUSVILLE, N.J.
TO SHOW CONDITIONS AS OF SEPTEMBER 1, 2005

THIS MAP HAS BEEN REDRAWN USING COMPUTER AIDED DRAFTING/DESIGN (CAD/D) BASED ON THE MAP PREPARED BY PHILIP J. VECERE, P.L.S., N.J. LIC. NO. 9884, DATED AUGUST 1961, LAST REVISED BY ARTHUR SWENSON, JR., P.L.S., N.J. LIC. NO. 30753, DATED AUGUST 31, 1989.

REVISIONS		
DATE	NAME	N.J. LIC. NO.
09/01/05	CHARLES E. SZOVATI	GS-35887
02/05/09	CHARLES E. SZOVATI	GS-35887
12/31/10	FREDERICK A. CRUGLI	NJPE&LS 19093
12/31/13	FREDERICK A. CRUGLI	NJPE&LS 19093
12/31/14	FREDERICK A. CRUGLI	NJPE&LS 19093
12/31/15	TED W. PIVOARNICK	NJPLS 35868
12/31/16	TED W. PIVOARNICK	NJPLS 35868
12/31/17	TED W. PIVOARNICK	NJPLS 35868
12/31/18	TED W. PIVOARNICK	NJPLS 35868
12/31/19	TED W. PIVOARNICK	NJPLS 35868



MILLSTONE TOWNSHIP
MONMOUTH COUNTY

MONMOUTH COUNTY

TOWNSHIP

MILLSTONE

I HEREBY CERTIFY THAT THIS MAP HAS BEEN REVISED UNDER MY IMMEDIATE SUPERVISION AND COMPLIES WITH THE LAWS OF THE STATE OF NEW JERSEY

Ted W. Pivovarnick

TED W. PIVOARNICK
N.J.P.L.S. NO. 35868

UPPER FREEHOLD TOWNSHIP
MONMOUTH COUNTY

NEW JERSEY DEPARTMENT OF TREASURY
DIVISION OF TAXATION
ENGINEERING & RAILROAD TAX DIVISION
APPROVED AS A TAX MAP PURSUANT TO THE PROVISIONS OF CHAPTER 375, LAWS OF 1919, ETC. FOR THE DIRECTOR, DIVISION OF TAXATION
BY *C. J. ...*
DATE: OCT - 5 1961 SERIAL NO. 931

TAX MAP
BOROUGH OF ROOSEVELT
MONMOUTH COUNTY, NEW JERSEY
SCALE: 1" = 200' AUG. 1961
PHILIP J. VECERE, N.J.P.L.S.
BOX 457 TITUSVILLE, N.J.
TO SHOW CONDITIONS AS OF SEPTEMBER 1, 2005